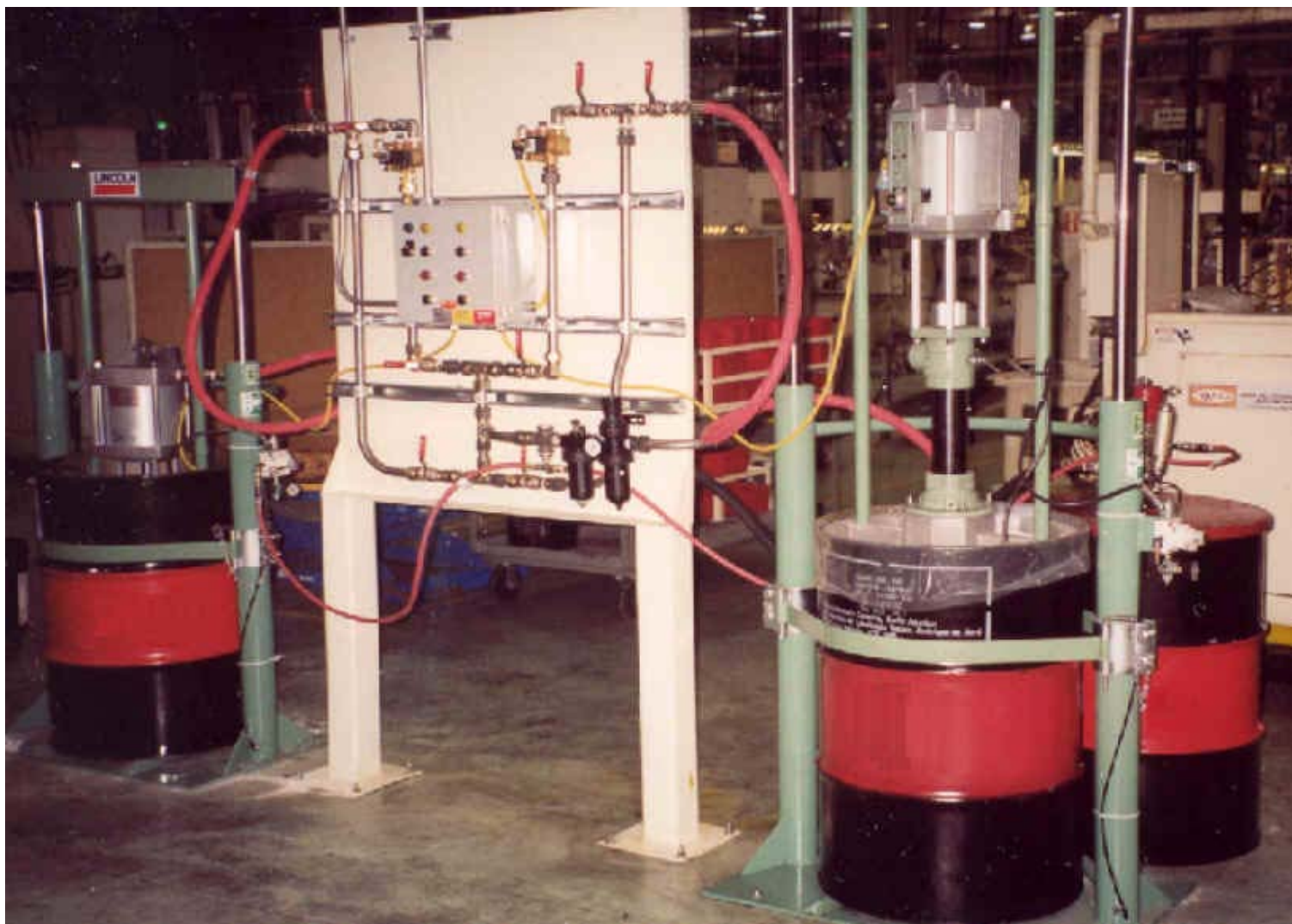


## Designed and Installed Projects

### Auto Parts Plant



Auto parts plant manufacturing suspension components. Measured amounts of grease are applied to the production part at several machines throughout the plant. This pumping system delivers the grease through an overhead piped system to the production machines. The system shuts the pump down when a drum is empty and transfers the operation to the other pump and full drum – no downtime. When a drum is empty, a beacon signal is initiated to let operators know that a new drum is required. The new full drum is put in place and a simple reset procedure is completed. The control automatically keeps the system operating from one drum change to the next with no down time. Project included system design, supply and installation of equipment, control and piping system.

Manufacturer's Representative  
**Bob Lewis**  
**PRO/MARK INDUSTRIALS**

**Phone:** (519) 658-3204  
**E-Mail:** sales@promarkindustrials.com

P.O. Box 1504  
Woodstock, ON.  
N4S 0A7