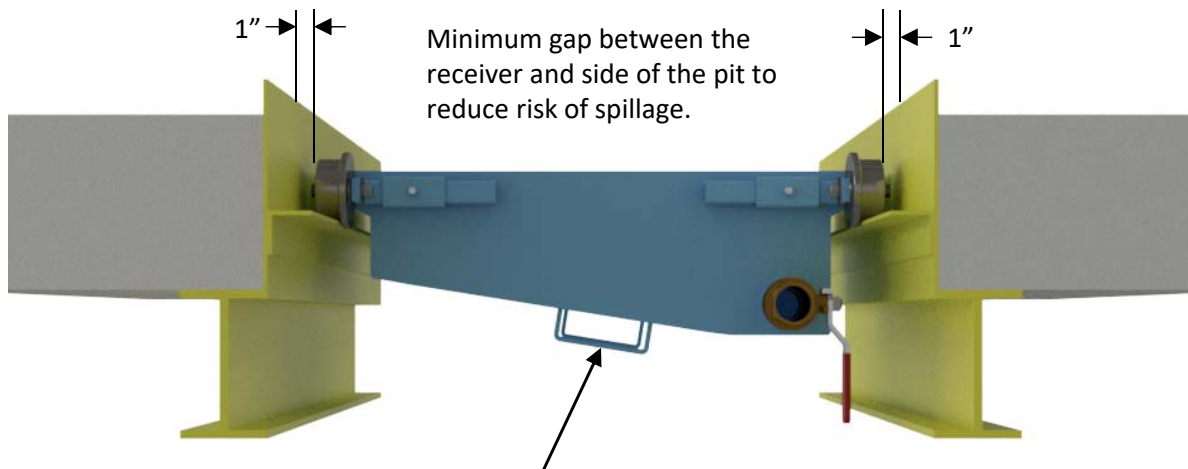
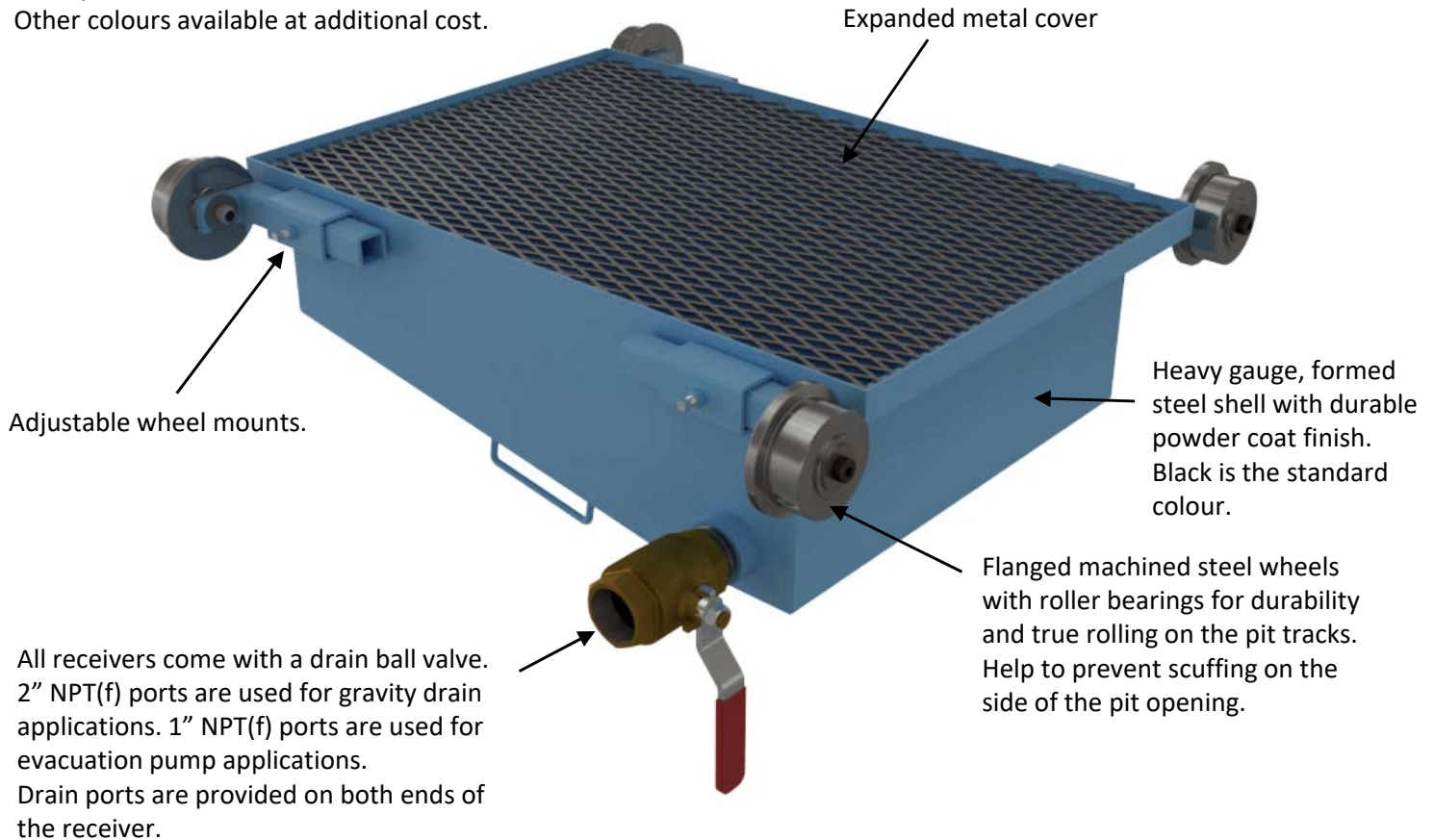




The RPD-MG Series, pit type waste oil receivers are designed to minimize the gap between the side of the receiver and the side of the pit opening to minimize spillage. Unlike catalog receivers, each RPD-MG receiver is fabricated to fit the pit opening with minimum gaps and roll smoothly on the pit tracks.

NOTE:

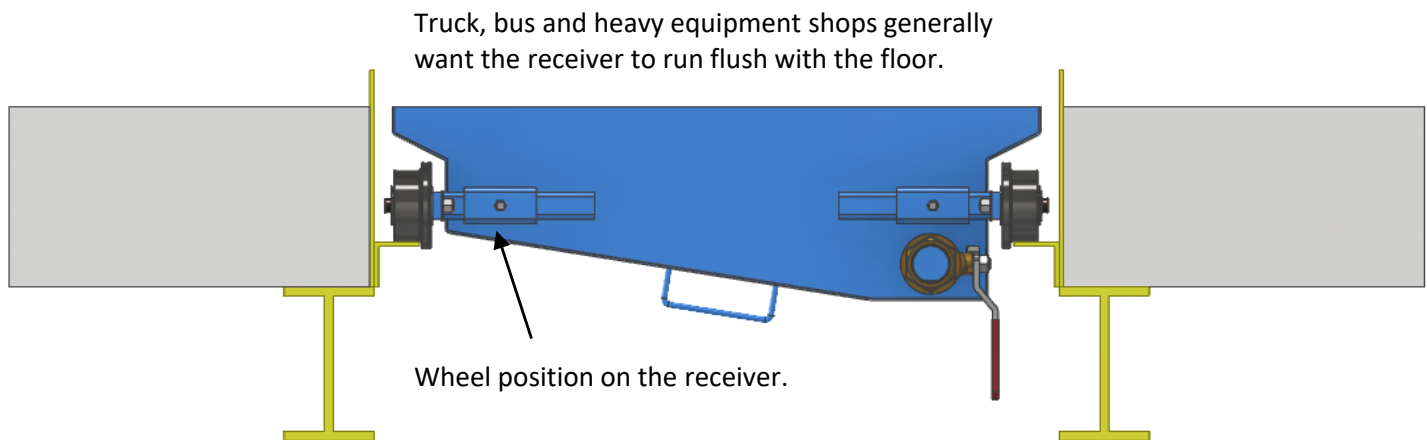
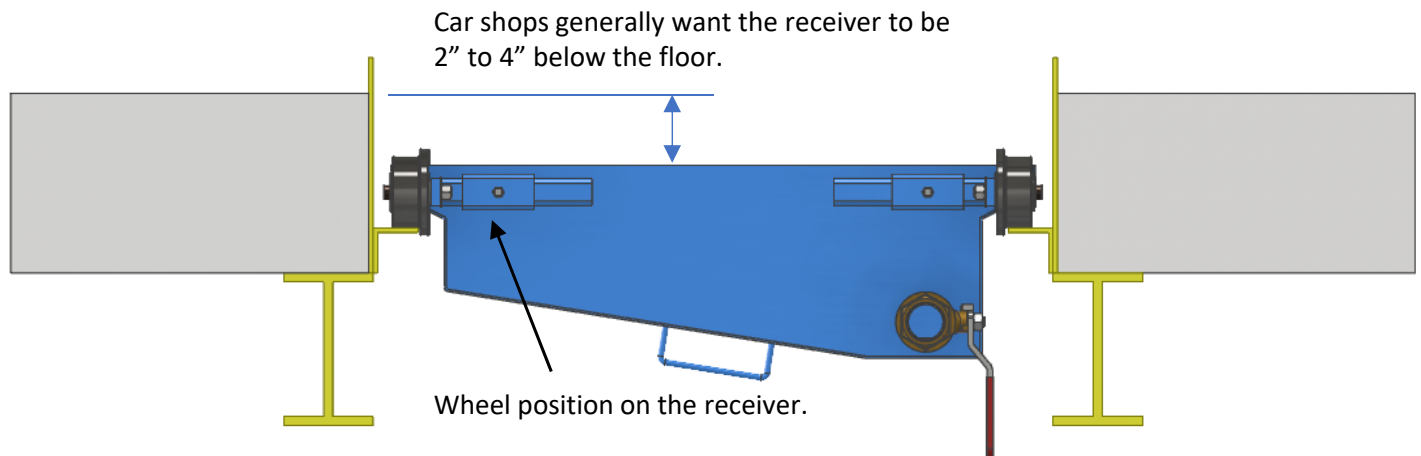
Black power coat is the standard finish.
Other colours available at additional cost.



Pull handles are located on the underside of the receiver to allow for tools or portable evacuation pumps to be mounted on the ends of the receiver.



The depth that the receiver is positioned at down into the pit opening is decided on prior to fabrication. The wheel mounts can be placed higher or lower on the receiver to accommodate the desired depth.



COMPARE

With **catalog waste oil receivers**, the lateral wheel adjustments are used to center the receiver in the pit leaving large gaps between the receiver and the pit opening sides. Also, there is no vertical height adjustment to set the depth of the receiver into the pit. The RPD-MG receivers reduce gaps and provide for depth positioning, reducing spillage and enhancing productivity.

