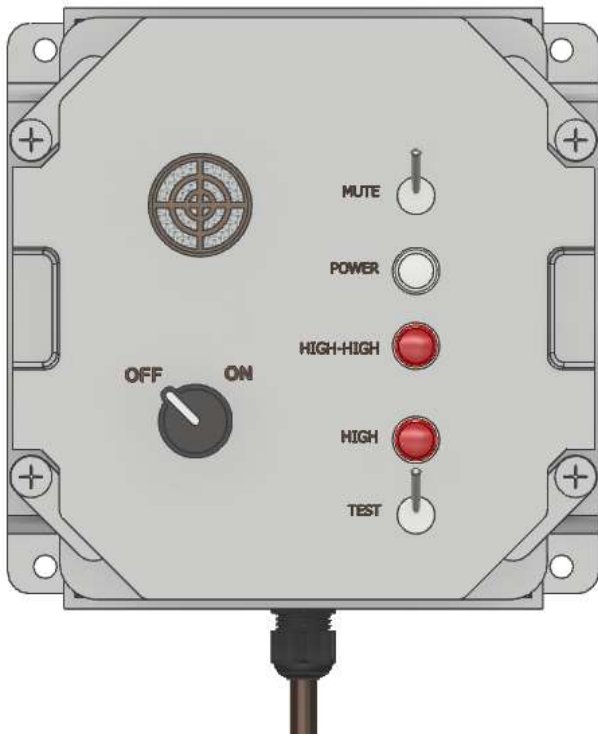


# EHL-2 Overfill Protection System



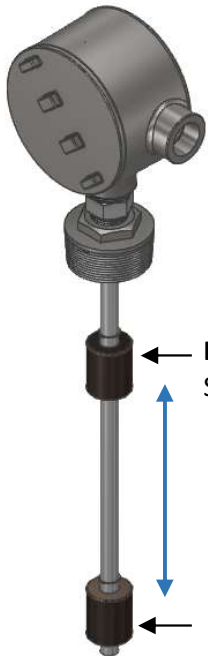
The EHL-2 Overfill Protection System issues a warning when the tank is at the **HIGH** level point and has to be emptied.

If the tank reached the **HIGH-HIGH** level point, the system will issue an alarm and will also shut the pump down. Two level alarms will be issued.

**HIGH** level point – the red HIGH light turns on and the buzzer will sound. The buzzer can be muted

**HIGH-HIGH** level point – the red HIGH-HIGH light turns on, the buzzer will sound and the pump will be shut down. The buzzer can be muted.

The system remains in the mode it was in when the alarms sounded until the level in the tank is brought down.



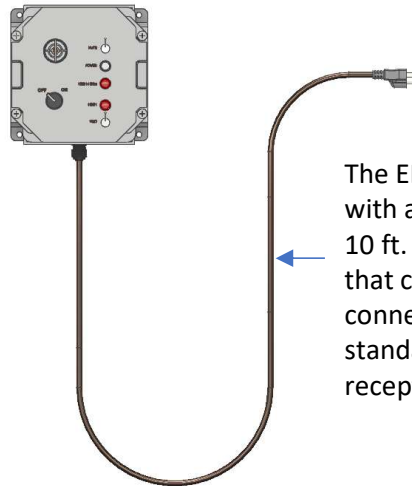
## Float Switch Assembly

The EHL-2 comes with twin float assembly which signals the alarm when the tank reaches the high level set points.

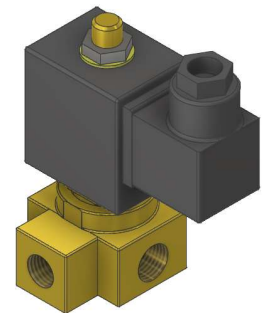
← **HIGH-HIGH** Level Float Switch

*The levels at which the float switches are pre-set prior to shipment. Float settings are determined by the tank size and type and the frequency at which the waste oil will be picked up and the tank emptied.*

← **HIGH** Level Float Switch



The EHL-2 comes with an integrated 10 ft. power cord that can be connected to any standard 120 VAC receptacle.



## Electric Air Solenoid Valve

Comes with the system and shuts the pump down when the tank reaches the HIGH-HIGH level.



## Connect Wire

The EHL-2 comes with 50 ft. LVT 18/4 four conductor wire to connect float switch assembly to the alarm panel.

The same LVT 18/4 is also used to make the solenoid valve connections. Only 2 of the LVT 18/2 conductors are used to connect the solenoid to the panel.



Applied  
Lubrication  
Technology Inc.

12 French Drive, Mono, ON L9W 5W1

Sales Associate: Bob Lewis Cell: (519) 658-3204 E-Mail: bob@promarkindustrials.ca