



T.O.S.S.

Tramp Oil Separation System

The T.O.S.S. is an economical solution to reduce tramp oil problems. The T.O.S.S. is designed to extend the life of water-based coolants, synthetics and alkaline wash water by removing free floating, dispersed and loosely emulsified tramp oils.

Applications for the T.O.S.S. can be found in metalworking facilities on machines such as grinding, turning, general machining operations and parts washers_ Screw machines shops will find it beneficial on their coolant sumps. It can also be used as a pre-treatment before chemical waste treatment systems and fine filtration systems, such as micro, ultra, nano or reverse osmosis systems.

Benefits

- Reduces Reservoir pump outs
- Reduces tramp oil to less than 1% by volume
- Reduces hazardous waste volumes up to 90%
- Reduces new fluid purchased up to 80%
- Minimal Maintenance
- Payback: 9 months to one year

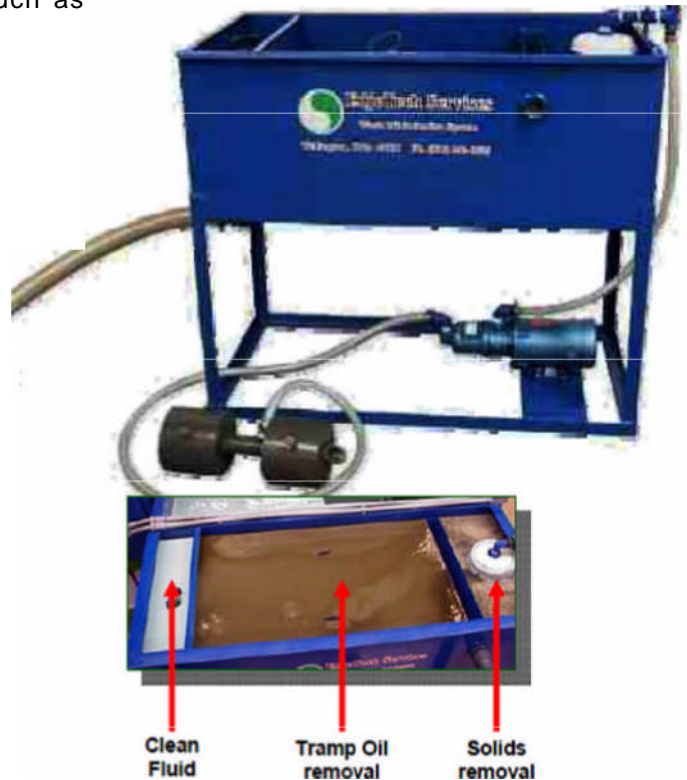
Features

- Complete system, compact, efficient
- Gravity Flow
- Unattended operation
- Minimum floor space required
- Flow rates starting at 1 US GPM
- 5 Solids filtration

Options

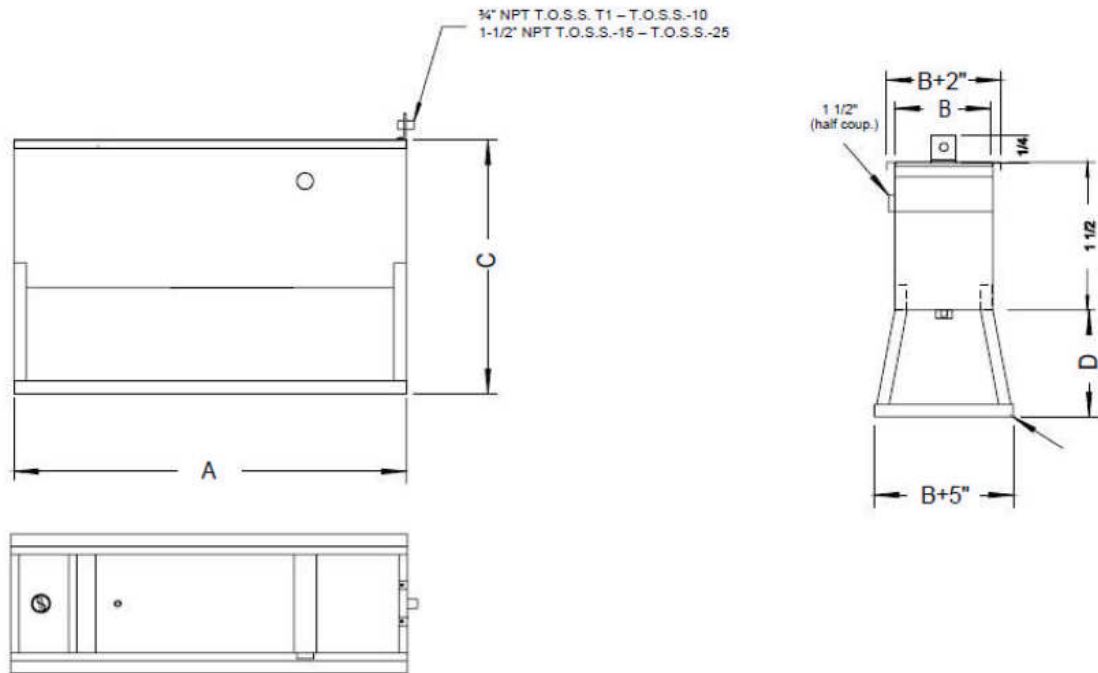
- V-bottom
- Bag Filter (100 micron)
- Optional pre-filter

- Gravity flow outlets
- Air or electric pump
- Portable units available
- Standard and Custom Sizes



EQUIPMENT SPECIFICATIONS

Specifications for the EdjeTech T.O.S.S. Series



Dimensions (inches) – Standard Units – Custom Units Available Upon Request

T.O.S.S.	Flow Rate GPM	Max. Operating Temp.	Operating Capacity	A	B	C	D
MT2	2	180°F	25	33	12-1/4	42	24
MT3	3	180°F	30	39	12-1/4	42	24
05	5	180°F	37	48	12-1/4	42	24
10	10	180°F	75	48	24-1/4	42	24
15	15	180°F	110	48	36-1/4	42	24
25	25	180°F	290	60	48-1/4	42	24



Vertical Skimmer

Ballast Skimmer



PRO/MARK INDUSTRIALS

Div. R.D. Lewis Sales Limited

Lubrication & Fluid Storage and Handling Solutions

Sales - System Design - Consulting

T.O.S.S. T1

Tramp Oil Separation System

The TOSS T1 is an economical solution to reduce tramp oil problems. The TOSS T1 is designed to extend the life of water-based coolants, synthetics and alkaline wash water by removing free floating and dispersed tramp oils from coolant reservoirs and parts washers.

Applications for the TOSS T1 can be found in metalworking facilities on machines such as grinding, turning and general machining operations. Screw machine shops will find it beneficial on their coolant sumps. This unit can also be used in roll forming, cold heading, stamping and tube mill water-soluble fluids for ferrous and non-ferrous operations.

Benefits

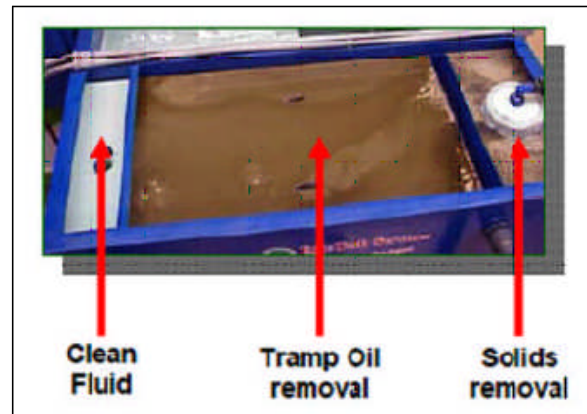
- Reduces Reservoir pump outs
- Reduces hazardous waste volumes up to 90%
- Reduces new fluid purchased up to 80%
- Minimal Maintenance
- Payback - 9 months to one year

Features

- Compact and efficient, fits most anywhere
- Clear lid for easy viewing
- Flow rate of 90 to 120 gallons per hour
- Solids filtration
- Oil/Water separation section
- Gravity flow outlets
- Air operated diaphragm pump
- Stationary, portable and high temperature units.
- Prefilter

Materials

- All steel tank construction
- Paint: Polyurethane cheical resistant
- Nylon reinforced tubing
- Air operated diaphragm pump
- Flow control valve
- Suction skimer designed for tight places
- Dimensions: 21" L x 14" W x 25" H
(does not included cart dimensions)

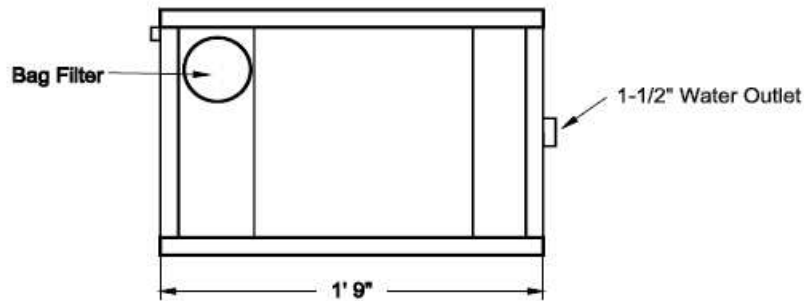


Web Site: www.promarkindustrials.com

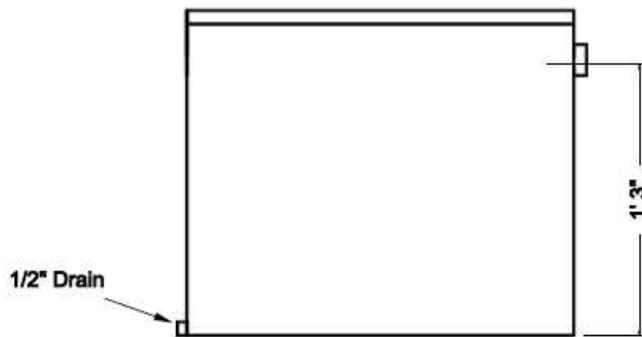


T.O.S.S. T1 SPECIFICATIONS

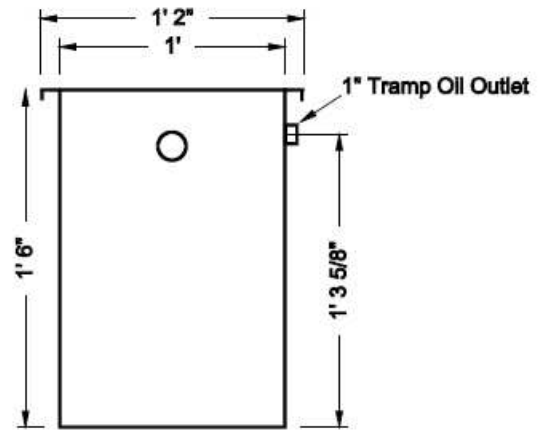
MODEL	FLOW RATE	PUMP	CART	SKIMMER
T1-AV	2 GPM	AIR	NO	VERTICAL
T1-AVC	2 GPM	AIR	YES	VERTICAL
TI-AVH	2 GPM	AIR - HIGH TEMPERATURE	NO	VERTICAL
T1-AB	2 GPM	AIR	NO	BALLAST
TI-ABC	2 GPM	AIR	YES	BALLAST
TI-ABH	2 GPM	AIR - HIGH TEMPERATURE	NO	BALLAST



Top View



Elevation View



Side View



**Vertical
Skimmer**

**Ballast
Skimmer**



PRO/MARK INDUSTRIALS

Div. R.D. Lewis Sales Limited

Lubrication & Fluid Storage and Handling Solutions

Sales - System Design - Consulting