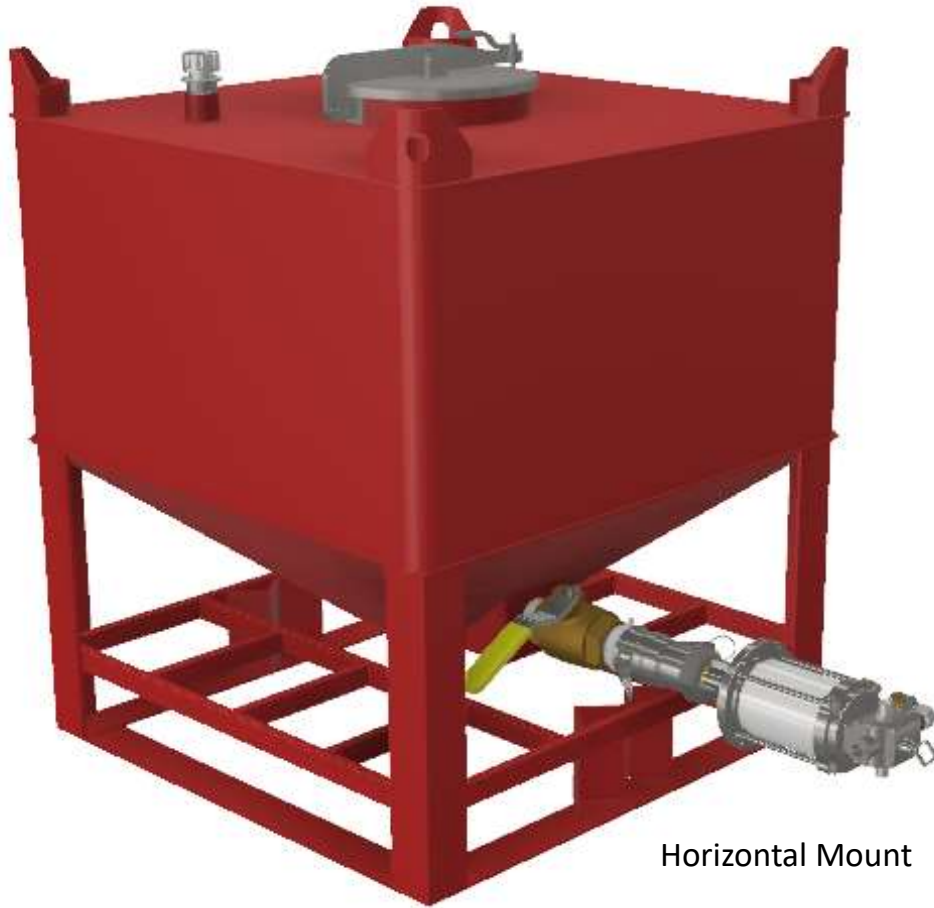
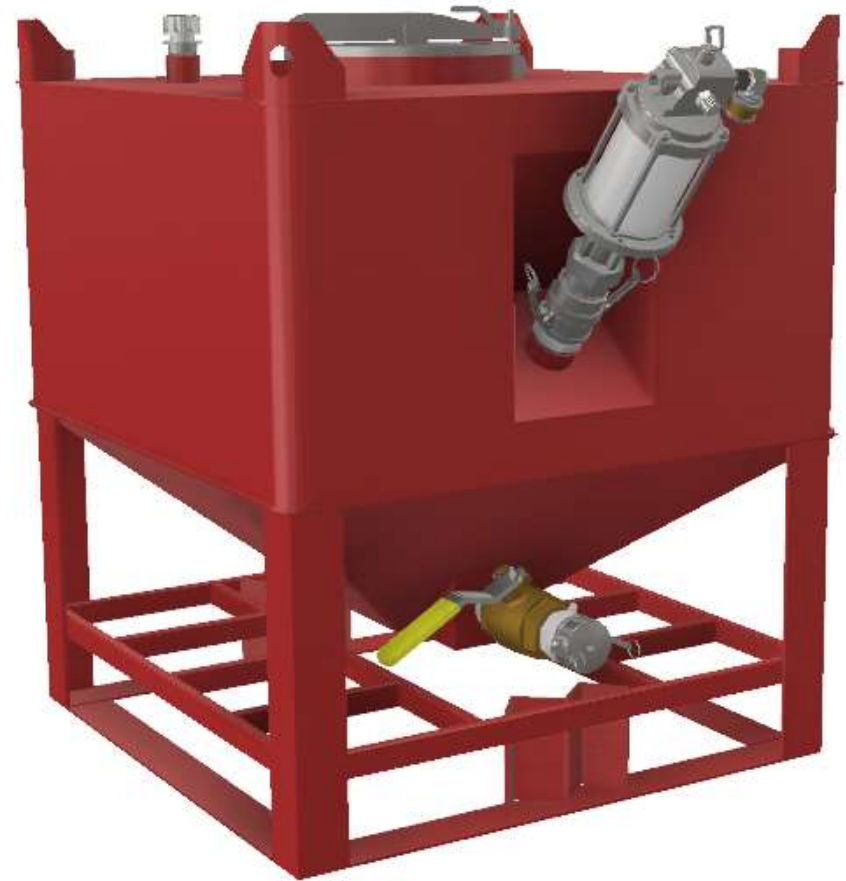


## Grease Pumps for Sloped Bottom Tote Tanks

Angle Mount



Horizontal Mount



Many sloped bottom steel tote tanks come with an angled access port that a Camlock coupler can be installed in to accommodate pump mounting. Pumps can also be mounted horizontally to the 3" Camlock coupler and drain valve that comes with most tanks.

NOTE: Sloped bottom tanks provide for greater volumes of the grease being pumped from the tank than flat bottom tanks do. However, with heavier grease, such as but not exclusive of NLG! #2 grease, not all of the grease will be pumped from the tank. Once the weight of the grease is insufficient to move the grease toward the bottom of the tank, the pump will start to pump a cavity in the grease. Depending on the grease, the operating and conditions and the size of the tote, there are applications where 25% of the grease remains in the tote. Consideration should be given to freight and handling costs. Tanks with piston followers will remove the grease to the bottom of the tank.



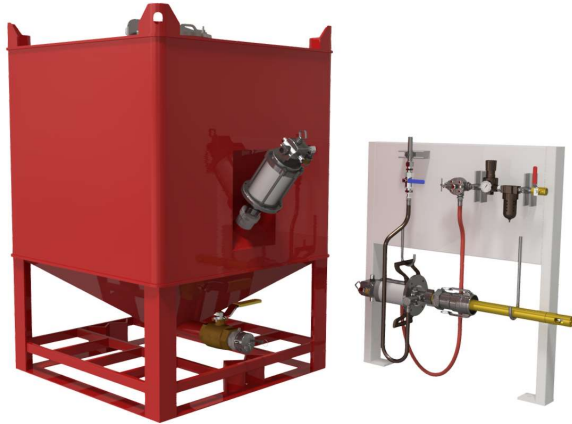
Applied  
Lubrication  
Technology Inc.

12 French Drive, Mono, ON L9W 5W1 Sales Consultant: Bob Lewis Phone: (519) 658-3204 E-Mail: [bob@appliedlubrication.com](mailto:bob@appliedlubrication.com)

# BGT - Bulk Grease Pump Stations

Two of the most common reasons that grease pumps fail are;

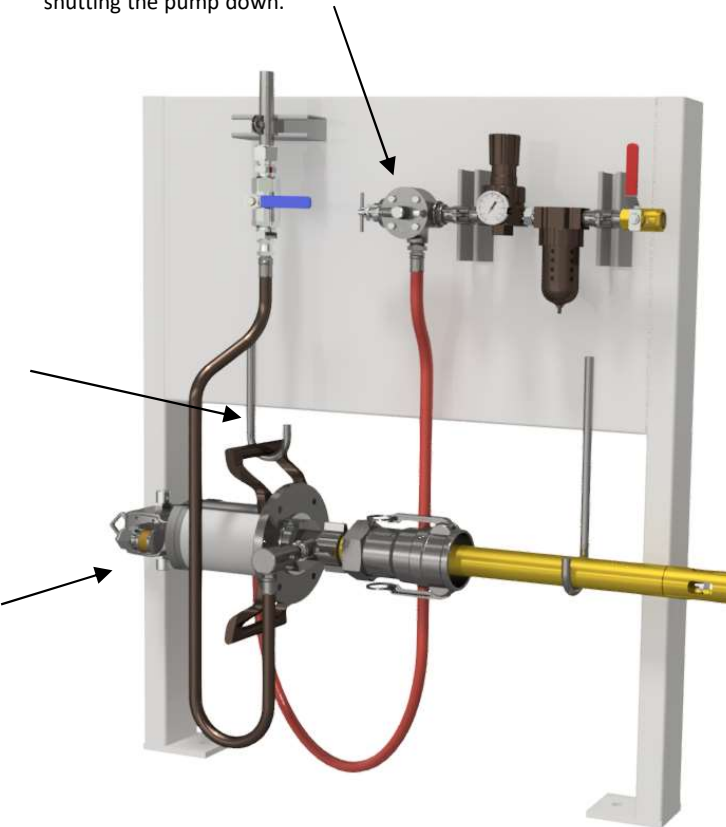
1. The grease pump comes in contact with foreign material during tank changeover. Because the pump is covered in grease when it is removed from the empty tank, any dirt or particulate that comes in contact with the pump will adhere to the pump and will be transferred into the new tank of grease. Eventually these foreign materials will work their way into the pump and the pump will fail.
2. Dry run events. Grease tanks will run empty and the pumps will experience dry run events. If the pump is turned off fairly quickly, no damage is done. If the pump is unattended and runs dry for long periods, premature failure will occur.



BGT – Grease Pump Stations are designed for hanging the pump during tank changeovers. This keeps the pump off of dirty floors or surfaces to help prevent the transfer of foreign material into the new grease tote.

BGT – Grease Pump Stations are supplied with various size pumps to suit the application.

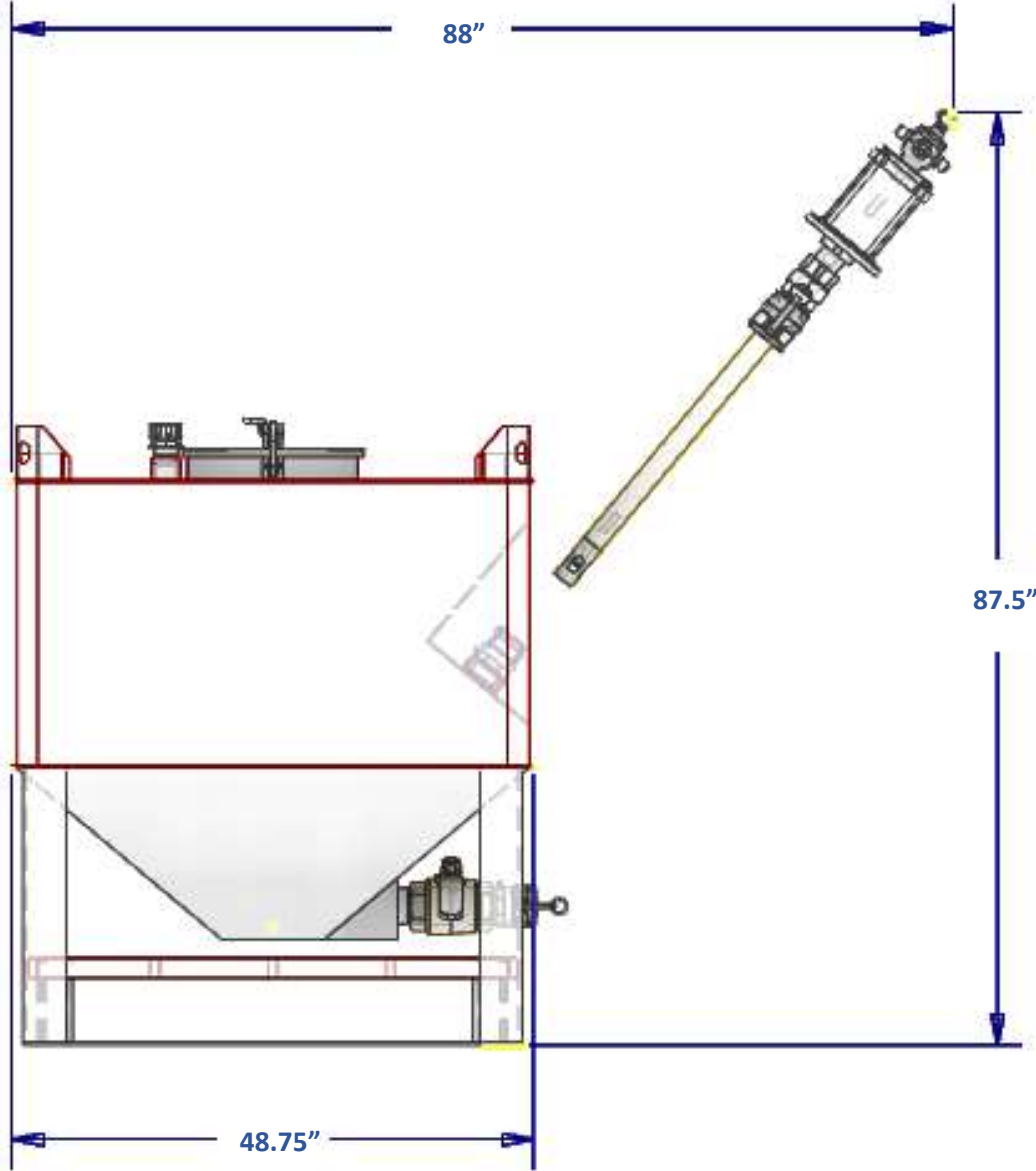
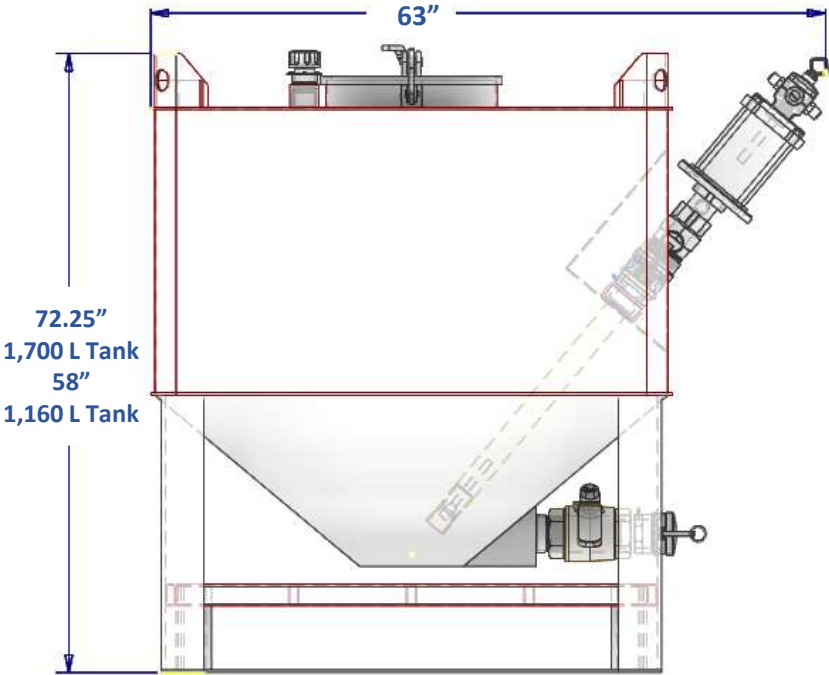
BGT – Grease Pump Stations include compressed air preparation components such as filters, regulators, gauges and lubricators. They also include a “**Dry-Run-Prevention Valve**”. This valve senses a change in the compressed air demand when a dry run condition begins and automatically terminates compressed air flow to the pump shutting the pump down.



Applied  
Lubrication  
Technology Inc.

12 French Drive, Mono, ON L9W 5W1 Sales Consultant: Bob Lewis Phone: (519) 658-3204 E-Mail: bob@appliedlubrication.com

Steel Sloped Bottom Tote Tank  
 Angled Grease Pump Mount



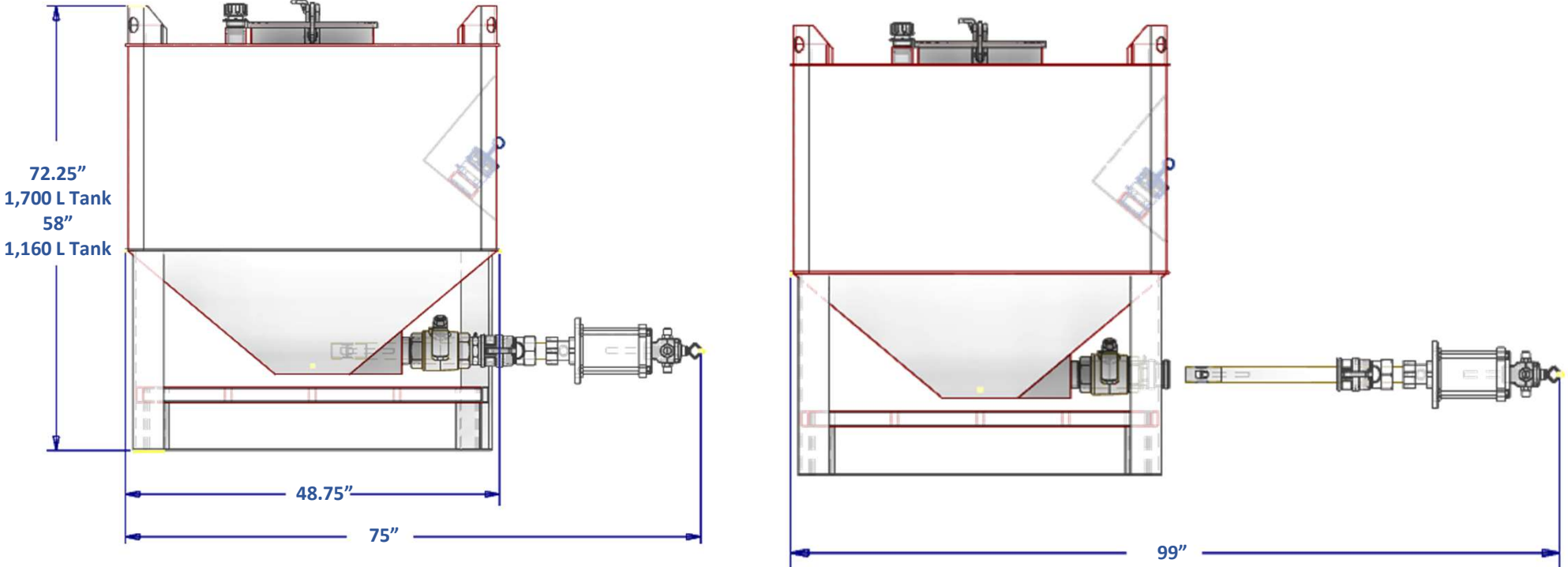
Dimensions are approximate



Applied  
 Lubrication  
 Technology Inc.

12 French Drive, Mono, ON L9W 5W1 Sales Consultant: Bob Lewis Phone: (519) 658-3204 E-Mail: bob@appliedlubrication.com

# Steel Sloped Bottom Tote Tank Horizontal Grease Pump Mount



Dimensions are approximate



Applied  
Lubrication  
Technology Inc.

12 French Drive, Mono, ON L9W 5W1 Sales Consultant: Bob Lewis Phone: (519) 658-3204 E-Mail: bob@appliedlubrication.com