

1,500 Liter Piston Tank



Up to NLGI 2 grease
Efficient – removes 98% of the grease with piston-follower.
Translucent tank shows product level.
Non-pressure for safe operation.
2 Way fork tube entry.
Removeable top lid.
3" full port ball valve and 3" female camlock coupler.

Low bin weight reduces freight costs
Waste & contamination eliminated
Poly tank will not dent or deform
Less maintenance and handling
Piston protects produce quality
Material returns are reduced
Piston seal is adjustable

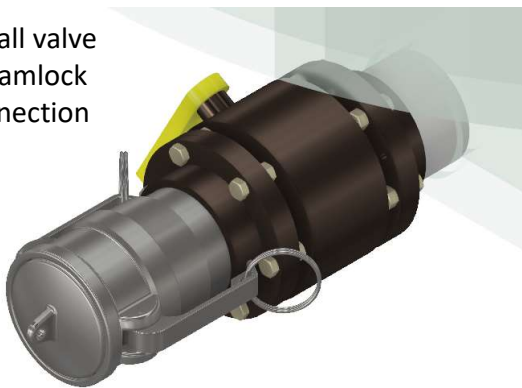


Cable Free



With Cables

3" Full port ball valve
3" Female camlock
coupler connection



Capacity:	1,500 Liters
Height:	81 inches
Width/Length:	48"
Top Lid:	51"
Tare Weight:	320 lbs.
Max. Internal Pressure:	0 PSI
Container:	Low density polyethylene
Piston:	Low density polyethylene
Piston Seal:	Neoprene



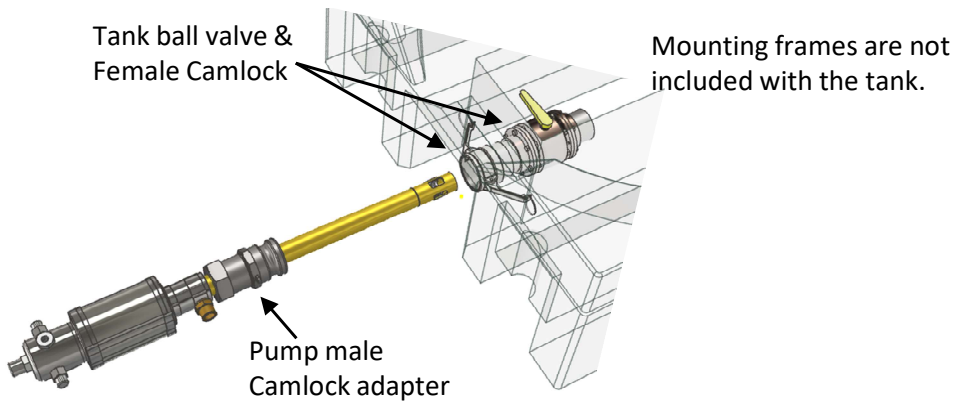
P.O. Box 1504, Woodstock, ON N4S 0A7
Phone: (519) 658-3204
E-Mail: sales@promarkindustrials.com

1,500 Liter Piston Tank Pneumatic Piston Pumps



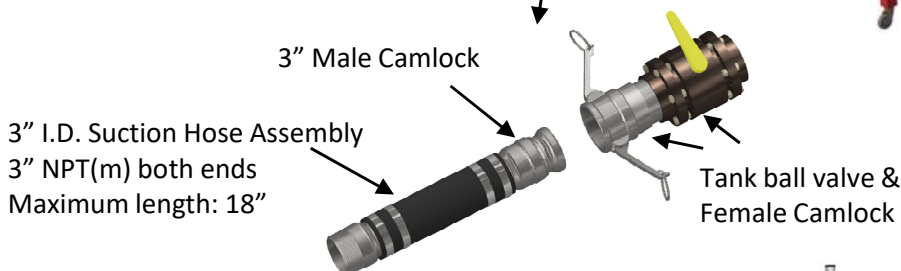
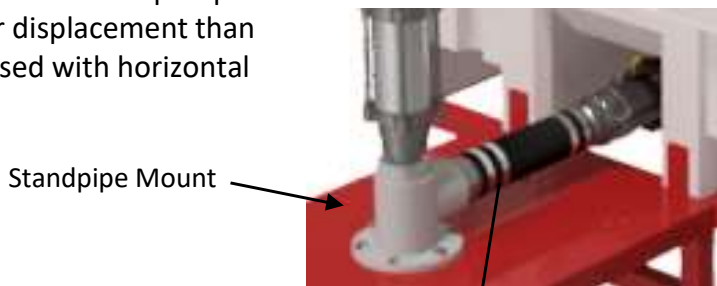
Pneumatic grease pumps are available in various ratio's and outputs to satisfy most applications. Pneumatic pumps can be used on production, maintenance and transfer applications. Horizontal mounting places the pump inlet directly in to the grease which enhances pump performance and reduces the risk of the pump losing it's prime.

Horizontally Mounted pneumatic piston pumps



Stand Pipe Mounted Pumps

Provide for the use of pumps with larger displacement than could be used with horizontal mounting.



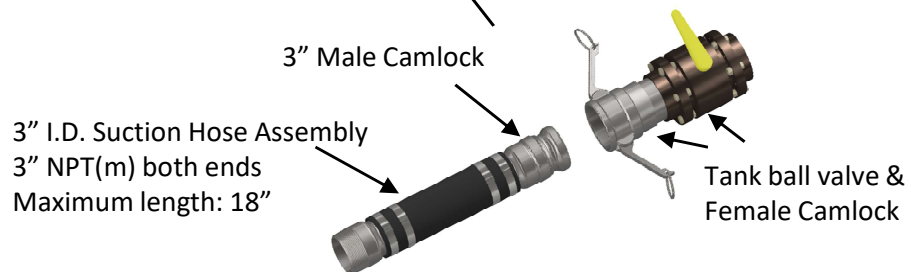
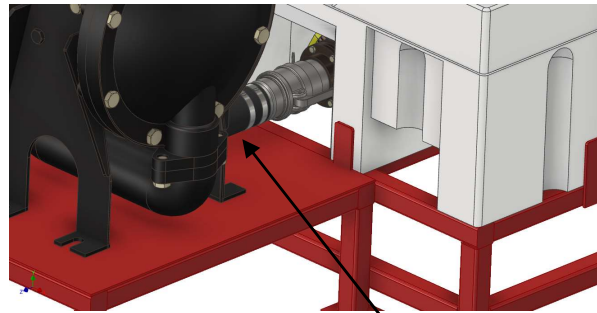
Mounting frames are not included with the tank. Mounting frames that are fabricated to suit the application can be ordered separately.

1,500 Liter Piston Tank Pneumatic Diaphragm pumps



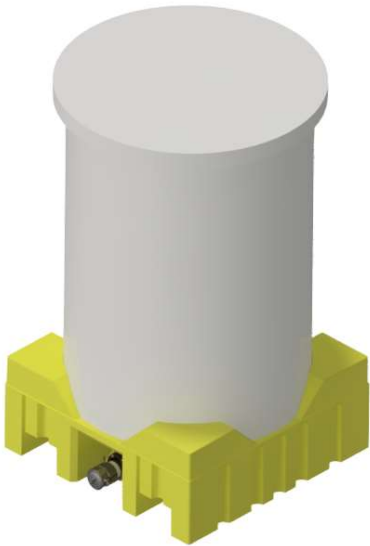
Pneumatic Diaphragm Pumps
Are often used to transfer grease from the tank to secondary pumps that are delivering the grease to the application. They are useful when for one reason or another, the process pump can not be connected directly to the tote. The natural forces being applied to the grease by the tank piston, combine with the suction capabilities of the diaphragm pump to move heavier greases.

Mounting frames are not included with the tank.
Mounting frames that are fabricated to suit the application can be ordered separately.



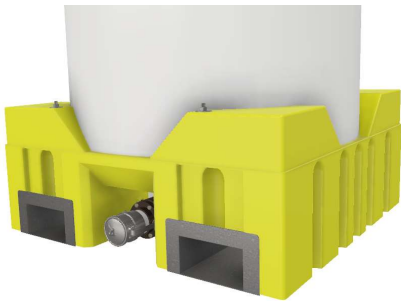
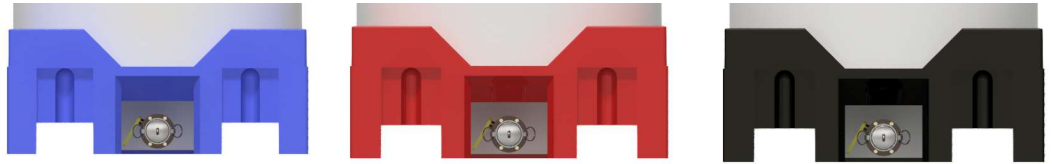
P.O. Box 1504, Woodstock, ON N4S 0A7
Phone: (519) 658-3204
E-Mail: sales@promarkindustrials.com

1,500 Liter Piston Tank Options



Coloured Bases for Product Identification

Several colour options are available for the tank bases. Where several materials are being stored or transferred, coloured bases provide convenient product identification and reduce the risk of cross contamination. Please contact us for available colours.



Steel Fork Pocket Inserts

Steel fork pockets provide long term durability and protection from the wear and tear associated with fork lift operations. With reasonable care, customers have found the useful life of poly piston bins to be at least 15 years.



Tank and Pump Mounting Frames

Tank and pump mounting frames do not come with the tanks. They can be ordered separately. All of our mounting frames are custom designed and fabricated to suit each application. Drawings of the mounting configurations are completed and presented to the customer for approval prior to the frames being fabricated.



P.O. Box 1504, Woodstock, ON N4S 0A7
Phone: (519) 658-3204
E-Mail: sales@promarkindustrials.com