



























# Applicators

## EVEN-FLO® APPLICATORS

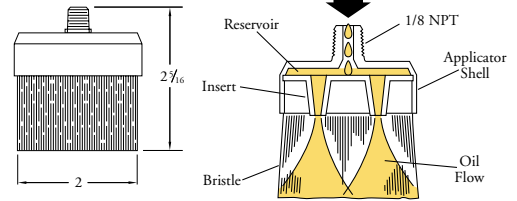


### APPLICATIONS:

The unique internal reservoir design of these applicators allow uniform dispensing of oil for chain lubrication. They are capable of handling a wide viscosity range of oils.

Stainless steel models provide long life and excellent cleaning capability in harsh environments.

Nylon and stainless steel models rated to 160°F.



### SELECTION CHART

1/8 NPT connections.

| Model No. | Bristle Type    |
|-----------|-----------------|
| 36051     | Nylon           |
| 36054     | Stainless Steel |

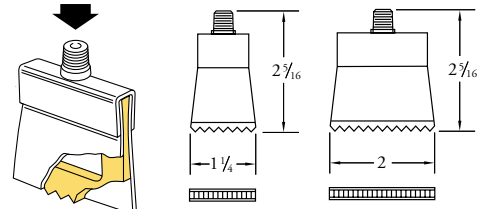
## EVER-LAST® APPLICATORS



### APPLICATIONS:

Patented Ever-Last applicators use four part construction to provide long life in the most demanding applications. Using ordinary shears, they may be trimmed to fit the exact size of chain and eliminate uneven wear of the applicator or side dripping of the lubricant. Using a neoprene cover and felt plate, the mechanical motion of the chain movement sets up a pumping action in the applicator.

Temperature rating of 200°F.



### SELECTION CHART

1/8 NPT connections.

| Model No. | Width (in.) |
|-----------|-------------|
| 36033     | 1-1/4       |
| 36036     | 2           |

## ROUND BRUSH APPLICATORS

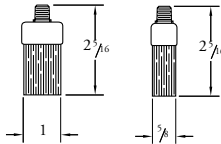


### APPLICATIONS:

Tqwpf brushes are used in applications requiring broad contact surfaces for lubricating and cleaning. They offer even oil distribution on the wearing points of chain.

Stainless steel models provide long life and excellent cleaning capability in harsh environments.

Nylon and stainless steel models rated to 160°F.



### SELECTION CHART

1/8 NPT connections.

| Model No. | Size (in.) | Bristle Type    |
|-----------|------------|-----------------|
| 36039     | 5/8        | Nylon           |
| 36042     | 5/8        | Stainless Steel |
| 36045     | 1          | Nylon           |
| 36048     | 1          | Stainless Steel |

## ROTARY APPLICATORS



### APPLICATIONS:

Tqwt{ applicators are used to lubricate and clean chains.

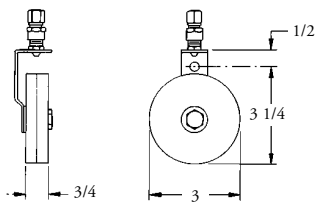
Available with a 3 inch nylon or stainless steel rotary brush, they provide chain driven cleaning or lubricating at the speed of the chain. They may be mounted in any orientation to the chain, but when located under the chain they are only used for cleaning.

Nylon brushes rated for temperatures to 250°F and stainless steel models rated to 400°F.

REPLACEMENTS: BRUSHES

| Model No. | Description                              |
|-----------|--|
| 36090     | 3" Nylon Rotary Brush (1 pair)           |
| 36093     | 3" Stainless Steel Rotary Brush (1 pair) |

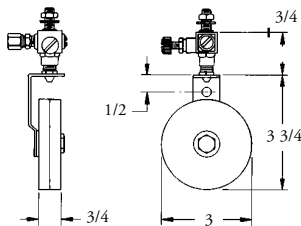
REMOTE ROTARY BRACKET FOR 1/4" TUBE



ACCEPTS 1/4 O.D. TUBE 5/16 MOUNTING HOLE

| Model No. | Bristle Type    |
|-----------|-----------------|
| 36072     | Nylon           |
| 36075     | Stainless Steel |

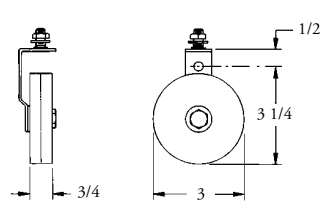
REMOTE ROTARY BRACKET/VALVE ASSEMBLY



ACCEPTS 1/4 O.D. TUBE 5/16-18 MOUNTING STUD 5/16 MOUNTING HOLE

| Model No. | Bristle Type    |
|-----------|-----------------|
| 36084     | Nylon           |
| 36087     | Stainless Steel |

ROTARY BRACKET ASSEMBLY WITH MOUNTING STUD



5/16-18 MOUNTING STUD 5/16 MOUNTING HOLE

| Model No. | Bristle Type    |
|-----------|-----------------|
| 36078     | Nylon           |
| 36081     | Stainless Steel |